

# GENIEMAT® FF70/FF70LDM

## Plywood Topping | Installation Guide

### EQUIPMENT REQUIRED

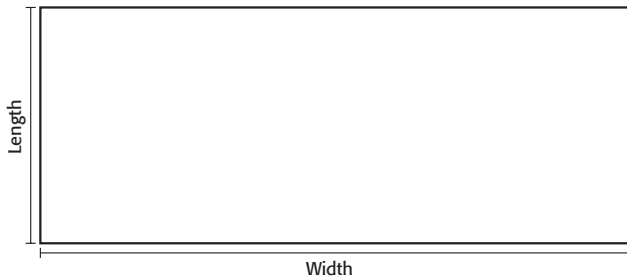
- Table saw / circular saw
- Rubber mallet
- Staple gun
- Staples
- Duck Tape
- Prybar

### GENERAL METHOD

**GenieMat FF70/FF70LDM** is installed from one corner of the room diagonally to the opposite corner. Subfloor should be clean and prepped as specified by the finish flooring provider's specification. Steps 1-7 should be completed as each panel is installed (i.e. do not install the entire area before stapling the seams). As panels are being installed, place plywood on top to prevent damaging the panels.

#### STEP 1

Determine overall dimensions of room (width and length). Determine start point of panels to avoid small cuts at perimeter.

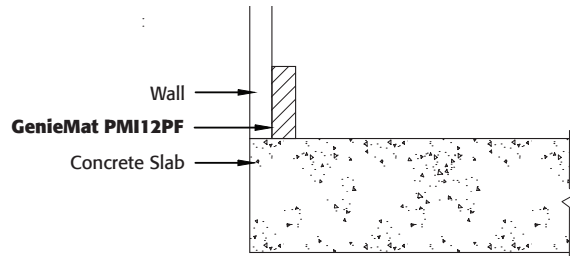


#### STEP 2

Determine perimeter gap. Gap must be 0.5% of the room's length, split on either end of the room (i.e. if room is 50' by 70', the gap is 0.5% x 50' by 0.5% x 70' = 3" by 4" total or 1.5" by 2" on each wall).

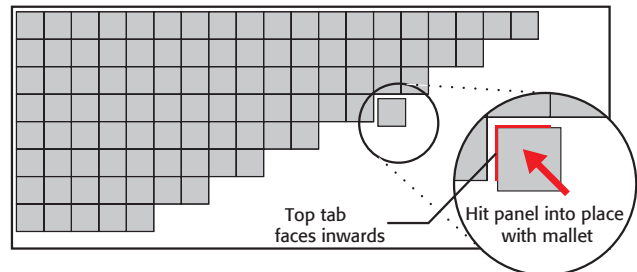
#### STEP 3

Install perimeter isolation strip (**GenieMat PMI12PF**) around all columns and perimeter. Staple to wall or adhere with double sided tape. Note: **GenieMat PMI12PF** to extend above height of finished floor.

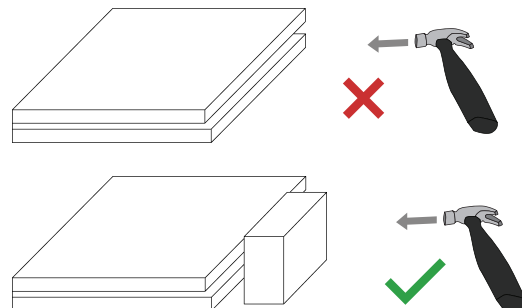


#### STEP 4

Install panels from one corner of the room diagonally to the opposite corner.



Do not directly hit the edge of the **GenieMat FF** panels with a mallet or hammer. Use a wood block flush with the edge to distribute the load and protect the edges as the panels are hit into place.



For Your Project Specific Questions

T. 416.449.0049 | E. info@pliteq.com

© Pliteq Inc. 2025.

®/™ Trademarks of Pliteq Inc. The information provided is accurate to the best of our knowledge at the time of issue. However, we reserve the right to make changes when necessary without further notification. Suggested application may need to be modified to conform with local building codes and conditions. We cannot accept responsibility for products that are not used, or installed, to our specifications. All listed dimensions are nominal.



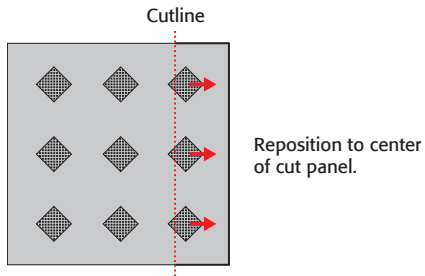
[www.pliteq.com](http://www.pliteq.com)

# GENIEMAT® FF70/FF70LDM

## Plywood Topping | Installation Guide

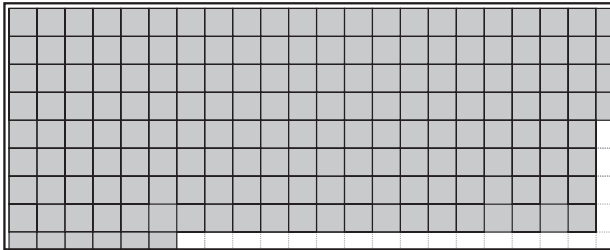
### STEP 5

- i. Cut perimeter panels to size using table saw/ circular saw.
- ii. If cut piece is small, isolator may need to be repositioned.



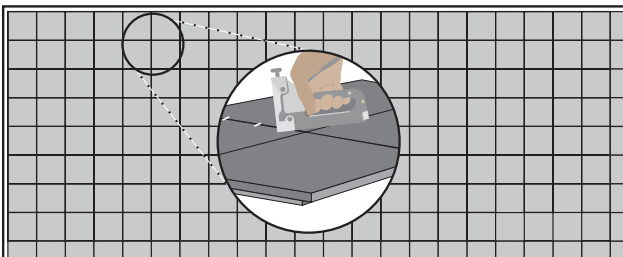
### STEP 6

Install cut panels around perimeter to complete grid.



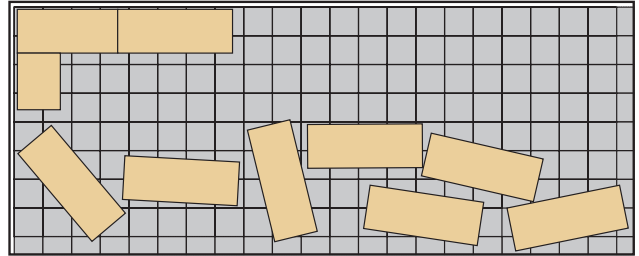
### STEP 7

Staple shiplap in three places per seam.



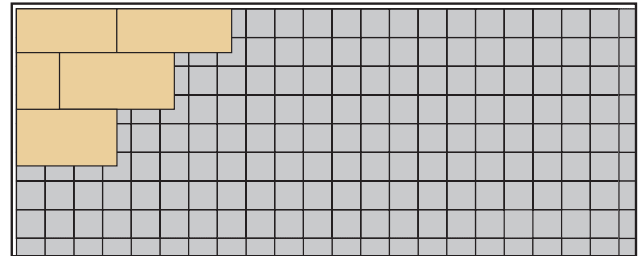
### STEP 8

Avoid walking on installed and stapled **GenieMat FF70/FF70LDM** panels. Place plywood on top in high traffic areas to prevent damaging the panels.



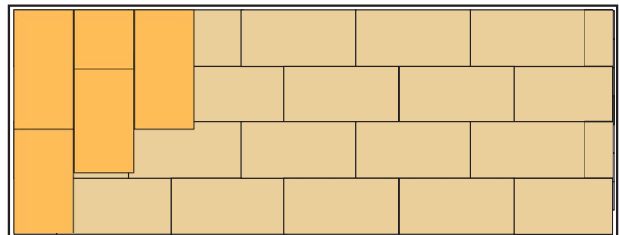
### STEP 9

Install the plywood offsetting the seams from the panels and adjacent layers of plywood. Screw the plywood every 12" on center (screw length should not exceed the thickness of the two layers being screwed together).



### STEP 10

Repeat step 9 with second layer of plywood crosslaying in the opposite direction.



## CONTACT Us

For Your Project Specific Questions  
**T.** 416.449.0049 | **E.** info@pliteq.com