

GENIEMAT® FF70/FF70LDM

Concrete Topping | Installation Guide

EQUIPMENT REQUIRED

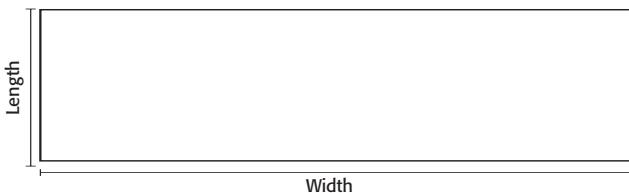
- Table saw / circular saw
- Rubber mallet
- Staple gun
- Staples
- Duck Tape
- Prybar
- 3 mil poly sheet
- 1/4" plywood (**GenieMat FF70LDM** Installation)

GENERAL METHOD

GenieMat FF70/FF70LDM is installed from one corner of the room diagonally to the opposite corner. Subfloor should be clean and prepped as specified by the finish flooring provider's specification. Steps 1-7 should be completed as each panel is installed (i.e. do not install the entire area before stapling the seams). As panels are being installed, place plywood on top in high traffic areas to prevent damaging the panels.

STEP 1

Determine overall dimensions of room (width and length). Determine start point of panels to avoid small cuts at perimeter.

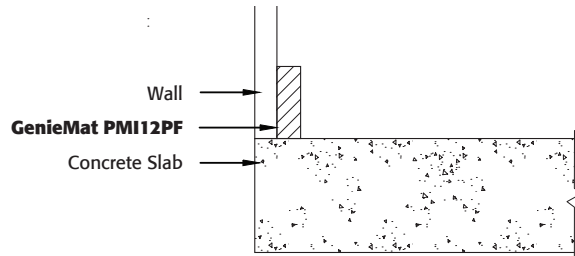


STEP 2

Determine perimeter gap. Gap must be 0.5% of the room's length, split on either end of the room (i.e. if room is 50' by 70', the gap is 0.5% x 50' by 0.5% x 70' = 3" by 4" total or 1.5" by 2" on each wall).

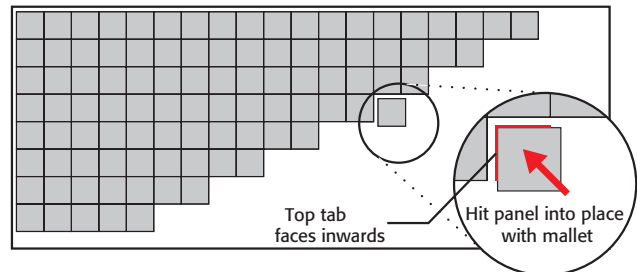
STEP 3

Install perimeter isolation strip (**GenieMat PMI12PF**) around all columns and perimeter. Staple to wall or adhere with double sided tape. Note: **GenieMat PMI12PF** to extend above height of finished floor.

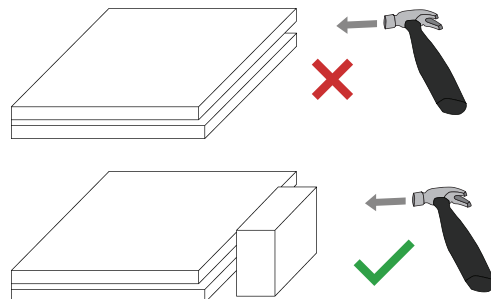


STEP 4

Install panels from one corner of the room diagonally to the opposite corner.



Do not directly hit the edge of the **GenieMat FF** panels with a mallet or hammer. Use a wood block flush with the edge to distribute the load and protect the edges as the panels are hit into place.



For Your Project Specific Questions

T. 416.449.0049 | E. info@pliteq.com

© Pliteq Inc. 2025.

®/™ Trademarks of Pliteq Inc. The information provided is accurate to the best of our knowledge at the time of issue. However, we reserve the right to make changes when necessary without further notification. Suggested application may need to be modified to conform with local building codes and conditions. We cannot accept responsibility for products that are not used, or installed, to our specifications. All listed dimensions are nominal.



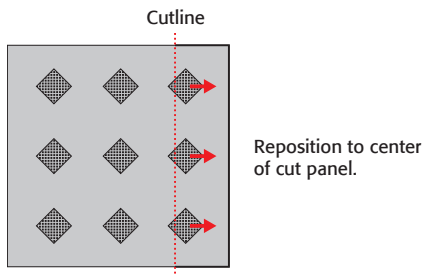
www.pliteq.com

GENIEMAT[®] FF70/FF70LDM

Concrete Topping | Installation Guide

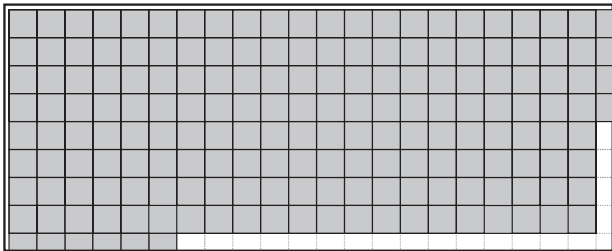
STEP 5

- Cut perimeter panels to size using table saw/circular saw.
- If cut piece is small, isolator may need to be repositioned.



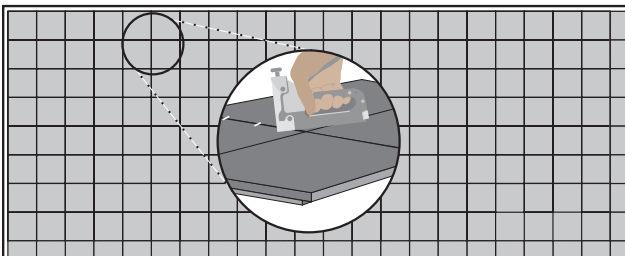
STEP 6

Install cut panels around perimeter to complete grid.



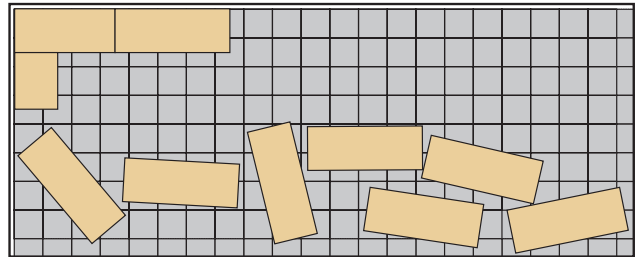
STEP 7

Staple shiplap in three places per seam.



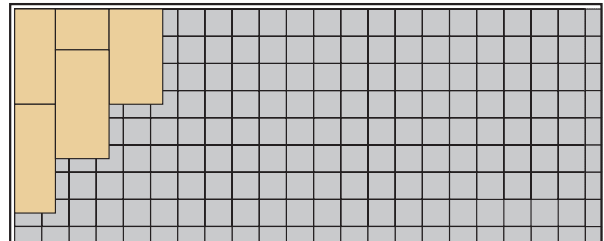
STEP 8

Avoid walking on installed and stapled **GenieMat FF70/FF70LDM** panels. Place plywood on top in high traffic areas to prevent damaging the panels.



STEP 9 (For **GenieMat FF70LDM** Installation Only)

Install the 1/4" plywood offsetting the seams from the panels. Screw the plywood every 12" on center (screw length should not exceed the thickness of the two layers being screwed together). For **GenieMat FF70** installation proceed to Step 10.



For Your Project Specific Questions
T. 416.449.0049 | E. info@pliteq.com

© Pliteq Inc. 2025.

®/™ Trademarks of Pliteq Inc. The information provided is accurate to the best of our knowledge at the time of issue. However, we reserve the right to make changes when necessary without further notification. Suggested application may need to be modified to conform with local building codes and conditions. We cannot accept responsibility for products that are not used, or installed, to our specifications. All listed dimensions are nominal.



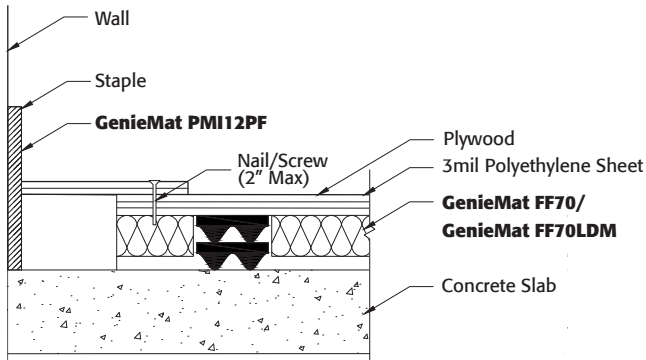
www.pliteq.com

GENIEMAT® FF70/FF70LDM

Concrete Topping | Installation Guide

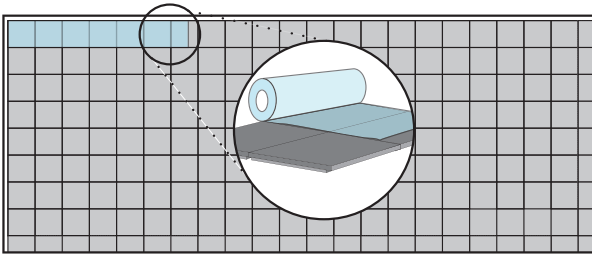
STEP 10

Nail or screw in a piece of plywood to bridge the perimeter gap. This will ensure no concrete seeps down into the gap. The 3 mil poly sheet is installed on top of this piece of plywood.



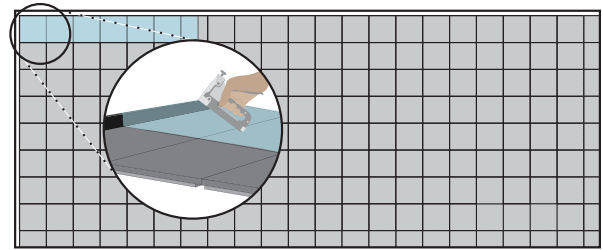
STEP 11

Roll out 3 mil poly.



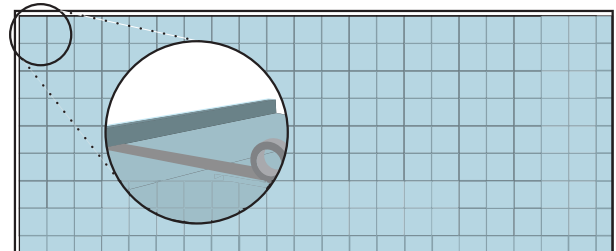
STEP 12

Staple the 3 mil poly to the **GenieMat PMI12PF**. Staple it 3 to 4 inches up the wall in order to cover perimeter gap.



STEP 13

Duct tape 3 mil poly seams.



CONTACT Us

For Your Project Specific Questions
T. 416.449.0049 | E. info@pliteq.com

© Pliteq Inc. 2025.

®/™ Trademarks of Pliteq Inc. The information provided is accurate to the best of our knowledge at the time of issue. However, we reserve the right to make changes when necessary without further notification. Suggested application may need to be modified to conform with local building codes and conditions. We cannot accept responsibility for products that are not used, or installed, to our specifications. All listed dimensions are nominal.



www.pliteq.com