



It's not magic, it's engineering.™

Impact and Airborne Sound Control

GENIEBOARD

UNIVERSAL FLOORING BOARDS FOR DRY SCREED



GENIEBOARD

Universal Flooring Boards for Dry Screed

GenieBoard 300 Series

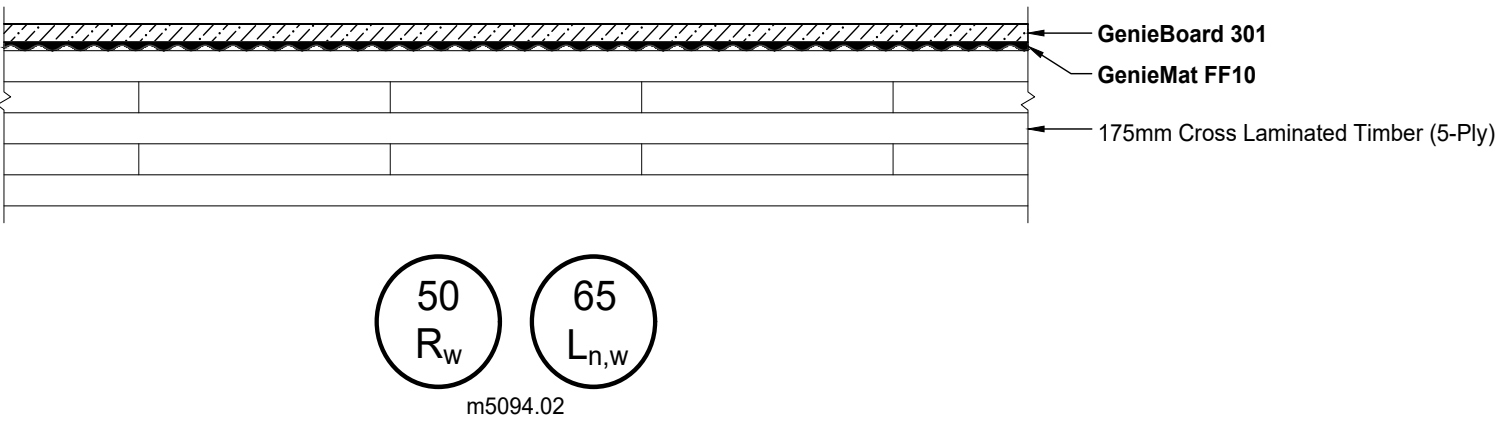
GenieBoard 300 series are used in conjunction with GenieMat® FF and GenieMat® RST to meet airborne and impact requirements in floor-ceiling assemblies while minimising the embodied carbon of the acoustic design. The universal dry flooring board can be used as an alternative to poured screed, or multiple plywood and cement board layers.

- Eliminating wet trade and cementitious board, simplifies construction and saves cost.
- Reduces the risk of mould and slurry staining.
- No cure time means faster construction.
- Quick install due to the shiplap joint.
- 92% reduction in embodied carbon compared to concrete and screed.
- Non-combustible.

PRODUCT SPECIFICATIONS		
PRODUCT SPECIFICATION	GENIEBOARD 301	GENIEBOARD 302
Thickness	20	25
Length (mm)	1500	1500
Width (mm)	500	500
Coverage (m ²)	0.75	0.75
Weight (kg/m ²)	23	29
Dead load (kN/m ²)	0.23	0.29
Thermal resistance (Km ² /W)	0.06	0.08
Fire class EN 13501	A2fl-s1	A2fl-s1

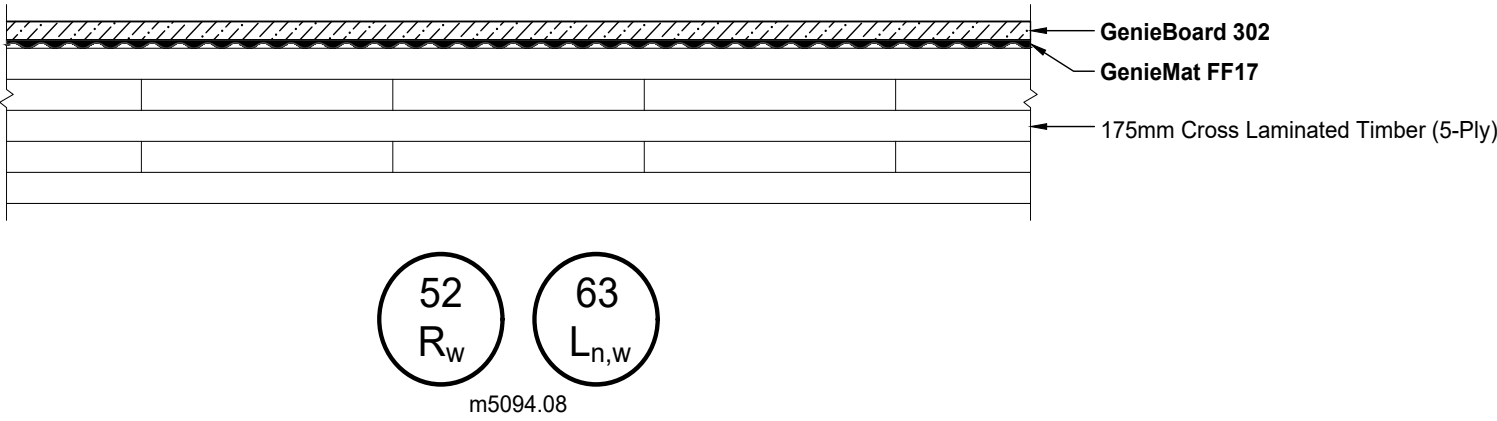
Cross Laminated Timber (5-Ply) with GenieBoard 301

Application: Office (BCO Shell and Core) and School buildings



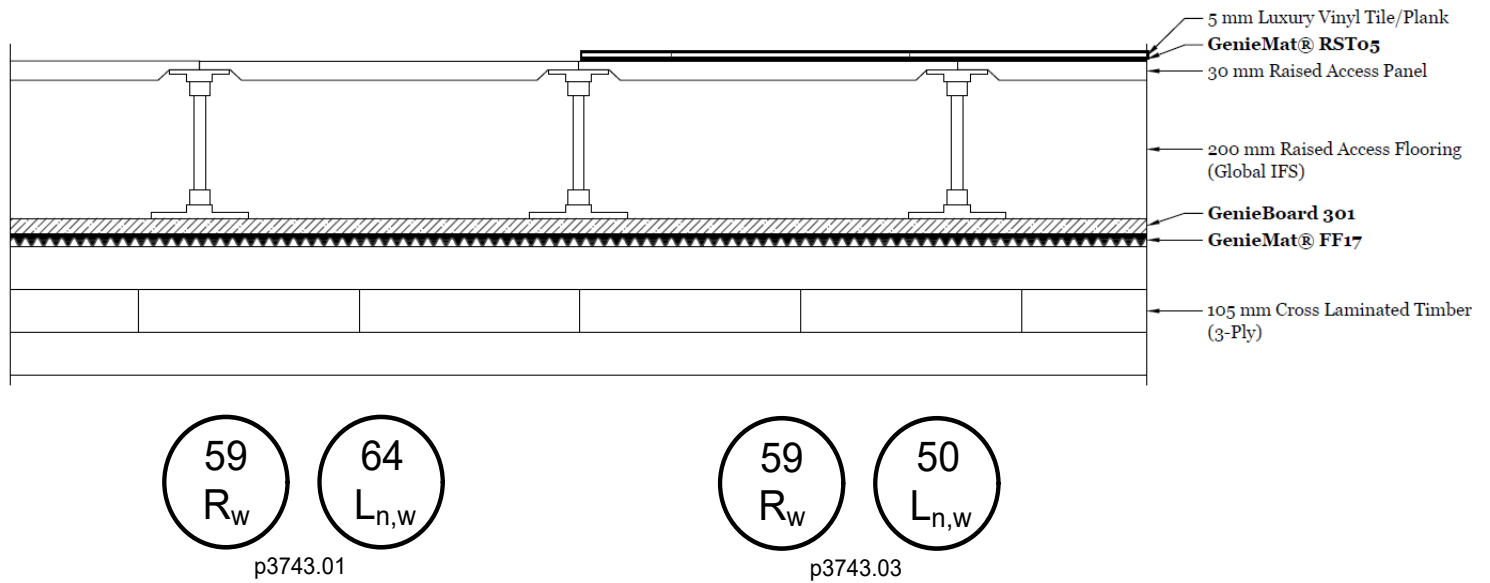
Cross Laminated Timber (5-Ply) with GenieBoard 302

Application: Office (BCO Shell and Core) and School buildings



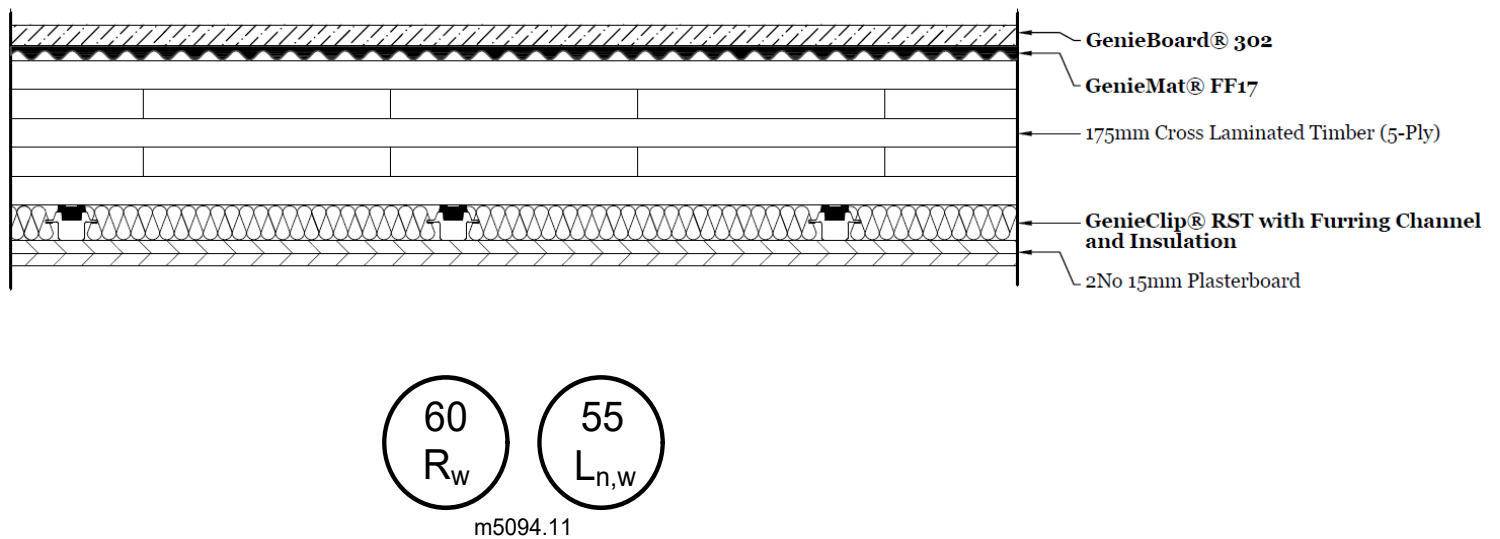
Cross Laminated Timber (5-Ply) with GenieBoard 301 and RAF

Application: Office (BCO CAT A) and School buildings



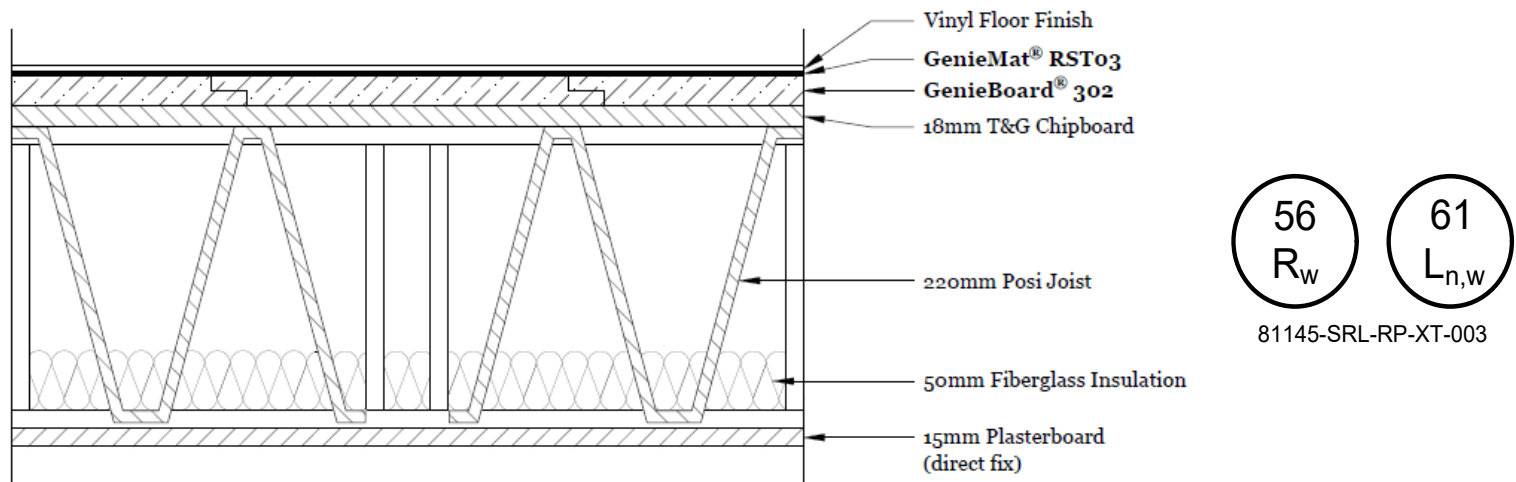
Cross Laminated Timber (5-Ply) with GenieBoard 302

Application: Multi-family residential



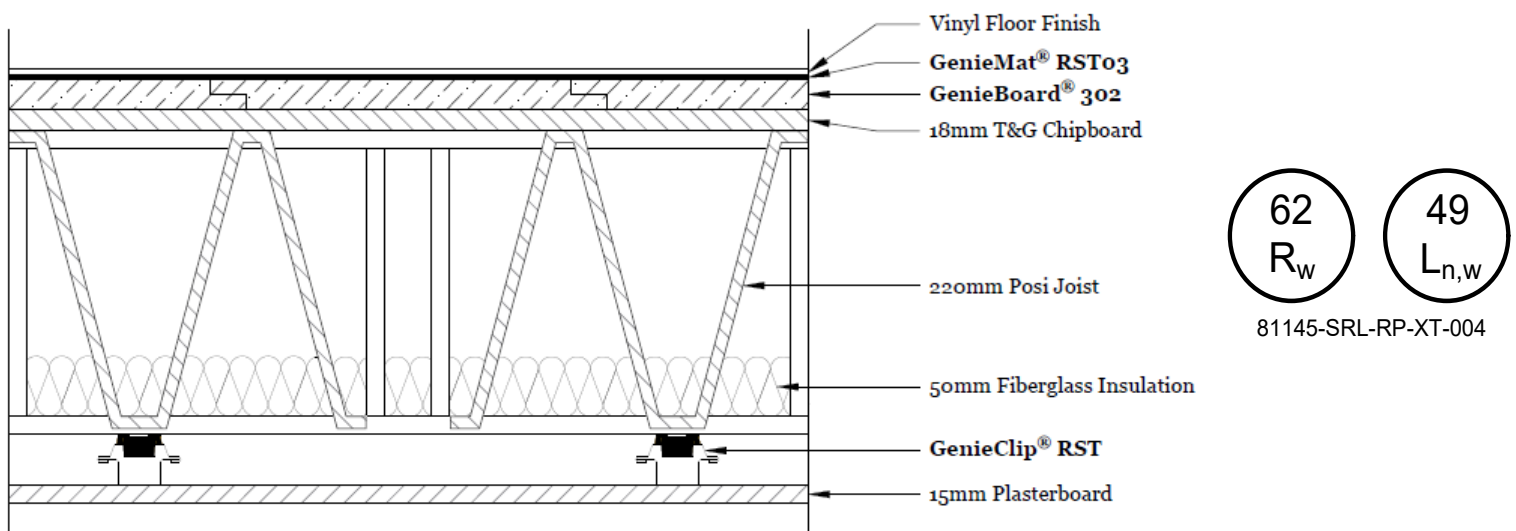
Timber Frame with GenieBoard 302

Application: Office and School buildings



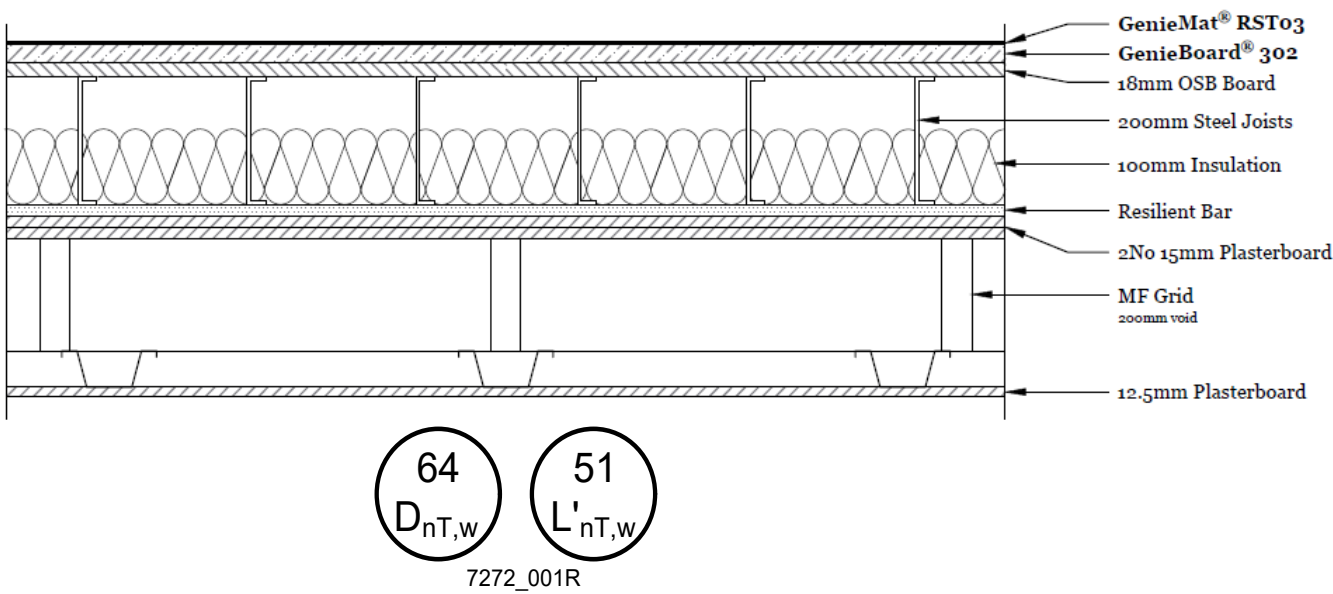
Timber Frame with GenieBoard 302

Application: Multi-family residential



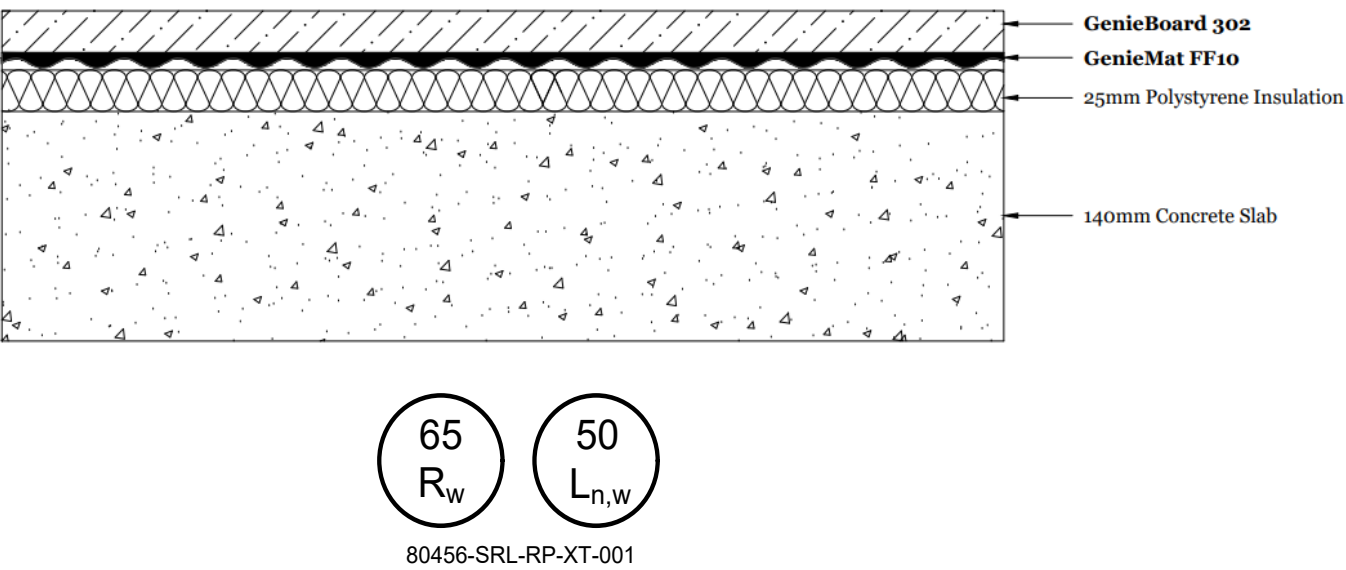
Steel Frame with GenieBoard 302

Application: Multi-family residential



Concrete Frame with GenieBoard 302

Application: Multi-family residential



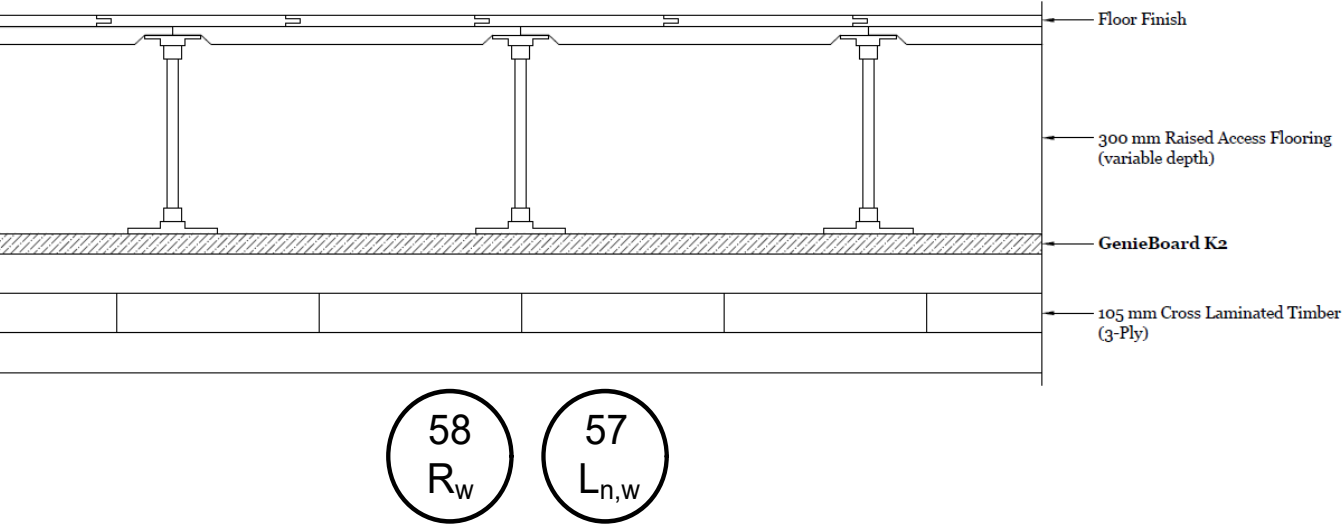
GenieBoard K2

GenieBoard K2 combines a non-combustible surface with resilient substrate to meet airborne and impact requirements in floor-ceiling assemblies while minimising the embodied carbon of the acoustic design. The universal dry flooring board can be used as an alternative to poured screed/concrete topping, providing a fire rating of at least K2, 60min (up to 150min).

- Provides effective impact and airborne sound insulation for under raised access floor systems.
- Non-combustible surface allows for air handling in the plenum.
- Eliminates the need for wet trade, resulting in a speedy install.
- Can be used directly on top of all structures in lightweight and heavyweight buildings.
- Provides perfect substrate for all floor finishes.

PRODUCT SPECIFICATION	
PRODUCT SPECIFICATION	GENIEBOARD K2
Thickness	57mm
Weight (kg/m²)	53
Maximum Point Load*:	3 kN
Fire Classification: (EN 13501-1:2018)	A2-S1fl
Fire Protection: (EN 14135:2004)	K2, 60min

Cross Laminated Timber (3-Ply) with GenieBoard K2



P7486.04

* Point load equals 10 x 10 foot

AROUND THE WORLD.

PLITEQ INC.

131 Royal Group Crescent
Vaughan, ON
L4H 1X9 Canada

4211, Yonge Street,
Suite 404, Toronto, ON
M2P 2A9 Canada

2015 Main St,
Vancouver, BC
V5T 3C2 Canada

T.+1 416 449 0049
info@pliteq.com
www.pliteq.com

PLITEQ (DE)

251 Little Falls Drive
Wilmington, DE
19808
United States of America

PLITEQ (AZ)

11701 N. 132nd Drive
Surprise, AZ
85379
United States of America

T.+1 480 805 5560
info@pliteq.com
www.pliteq.com

PLITEQ (UK) LTD.

Office 205, Orega High
Holborn, 16 High Holborn,
London, WC1V 6BX
United Kingdom

T.+44 203 9846444
info@pliteq.co.uk
www.pliteq.co.uk

PLITEQ MEXICO

Calz. Gral. Mariano
Escobedo 476-piso 12
Chapultepec Morales,
Anzures,
Miguel Hidalgo, 11590
Ciudad de México, CDMX
Mexico

T.+52 1 938 164 1551

PLITEQ ASIA PACIFIC PTE LTD.

#19-13, 101 Cecil Street,
Tong Eng Building, 069533
Singapore

T.+65 6813 2017
info@pliteq.sg
www.pliteq.sg

PLITEQ BUILDING MATERIALS TRADING LLC.

European Business Centre
Dubai Investment Park
PO Box 473 512
United Arab Emirates

T. +971 4 567 4944
info@pliteq.ae
www.pliteq.ae

PLITEQ AUSTRALIA PTY LTD.

68-82 York St, South
Melbourne, VIC, 3205
Australia
ABN: 86 675 027 433

T.+61 455 203 269
info@pliteq.com.au
www.pliteq.com.au

